

Overview

Public seating system for high traffic areas. Designed for high volume use in waiting rooms, dayrooms, visiting area, lounge, exercise and multi-purpose areas. Available in multiple configurations and with connecting tables. Ergonomically designed to provide optimal comfort.

Fabrication:

Base Frame: Tubular steel, bent and welded to provide arm or armless in-line seating. Standard configurations for 1 to 5 people. Flat steel plate welded to the frame at each seat location to provide strength, support, and a mounting platform on which the seat is attached.

Seats: One-piece seat and back. Smooth maintenance free surface allows for easy cleaning. Molded-in threaded steel inserts provide for tamper-resistant attachment to base frame.

Material:

Base Frame: 2" diameter, 14 gauge steel with 11 gauge steel seat supports.

Seats: Rotationally molded, specially formulated, fire-retardant, high impact polyethylene with ultraviolet light stabilizers (to reduce fading). Chemically resistant to blood, vinegar, urine, feces, salt solution, and chlorine solution.

Flammability Test Standards:

Certified to pass the following flammability standards:

- State of California, Technical Bulletin No. 133, Flammability Test Procedure for Seating Furniture for Use in Public Occupancies.

Color:

Frame: Black powder coat.

Seat: Buff, Fog Grey, Plum, Teal, Slate Blue, Black.

Weight:

Varies with size. Contact manufacturer.

Options:

Available as a free-standing unit with glides or fitted with tabs for bolt-down installation. Intermediate, end and corner tables.

Assembly:

No assembly required.

Installation:

For bolt-down application, fasten to floor. Floor mounting hardware included.

Warranty:

5 year limited replacement warranty.

Maintenance:

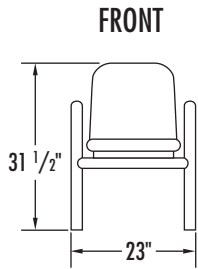
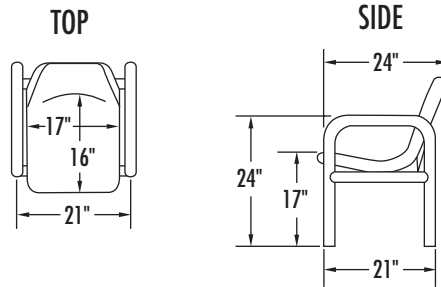
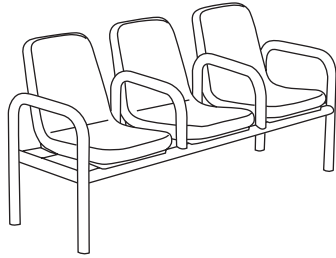
Easily cleaned with a damp cloth and a mild soap solution.

Filing System:

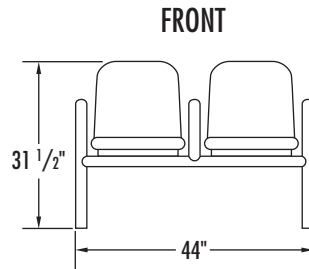
12600 Institutional Furniture

11197 Correctional Furniture

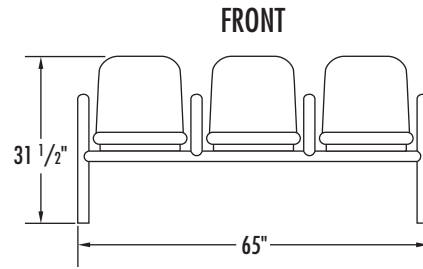
Continued on back.



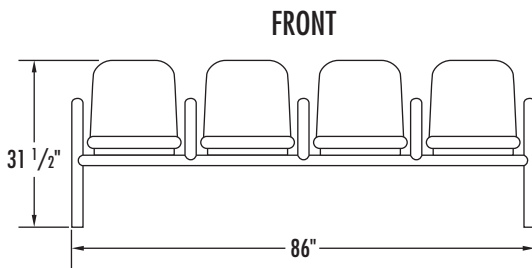
Model #: C212-1 (Without arms)
C213-1 (With end arms)



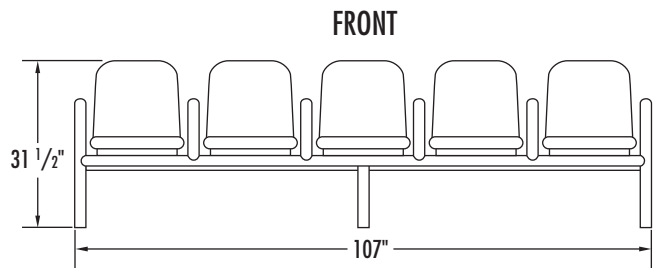
Model #: C212-2 (Without arms)
C213-2 (With end arms)
C214-2 (With end & divider arms)



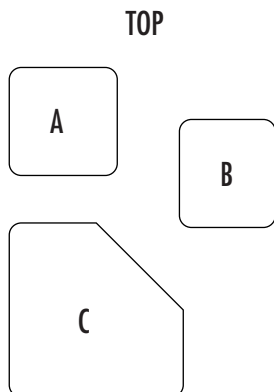
Model #: C212-3 (Without arms)
C213-3 (With end arms)
C214-3 (With end & divider arms)



Model #: C212-4 (Without arms)
C213-4 (With end arms)
C214-4 (With end & divider arms)



Model #: C212-5 (Without arms)
C213-5 (With end arms)
C214-5 (With end & divider arms)



Model #: A: C221-1103 (Intermediate Table)
B: C221-1107 (Right Side End Table - Glides)
C221-1105 (Right Side End Table - Bolt-Down)
C221-1106 (Left Side End Table - Glides)
C221-1104 (Left Side End Table - Bolt-Down)
C: C221-1102 (Corner Table - Glides)
C221-1101 (Corner Table - Bolt-Down)