

Floor Mount Stool - Slammer Stone® Seat



Model	S561-100
Dimensions	
Overall Height	18.5"
Base Width	6"
Seat Diameter	13"
Weight	14 lbs



Fabrication & Material

Base: 18" high, 2 1/2" tubing, fully welded both top and bottom to 6" x 6" x 1/4" plates that have four holes each. 14 gauge steel tubing with 1/4" thick steel mounting plates.

Seat: 13" diameter Super Slammer Stone. High density, color impregnated compression molded Super Slammer Stone® composite that is highly scratch and stain resistant. Four 5/16" diameter molded-in threaded inserts for superior metal-to-metal connection.

Environmental Test Standards

GREENGUARD and GREENGUARD Gold Certified by UL Environment. Product certified for low chemical emissions to UL 2818. UL.COM/GG.

Color

Base: Grey powder coat.

Super Slammer Stone Seat: Canyon, Wild Berry, Meadow, Mojave, Pine Cone, River Rock, Lagoon, Sea Spray, Raven

Assembly

Attach seat to base.

Installation

Mounts directly to floor. Floor mounting hardware not included.

Warranty

1 year limited replacement warranty

Maintenance

Legs: When cleaning stainless steel, Norix recommends the use of a cleaner made especially for stainless steel products. Seat: For routine and regular cleaning maintenance, Norix recommends the use of Simple Green® or an equivalent cleaning product. For the deep-scrub cleaning of tougher stains, marks and debris, we recommend the use of Clorox® Clean-Up® Cleaner + Bleach or an equivalent cleaning solution.

Norix Group, Inc.
 1800 W. Hawthorne Lane,
 Suite N
 West Chicago, Illinois 60185
 Phone: 630-231-1331
 Toll Free: 800-234-4900
 Fax: 630-231-4343
 Email: furniture@norix.com
 www.norix.com
 ©2016 Norix Group, Inc.

Specifications subject to
 change without notice.
 ©2016 Norix Group, Inc.
 All Rights Reserved.
 Printed in U.S.A. 12/16

Floor Mount Stool - Stainless Steel Seat



Model	S561-120
Dimensions	
Overall Height	18"
Base Width	6"
Seat Diameter	12"
Weight	14 lbs



Fabrication & Material

Base: 18" high, 2 1/2" tubing, fully welded both top and bottom to 6" x 6" x 1/4" plates that have four holes each. 14 gauge steel tubing with 1/4" thick steel mounting plates.

Seat: 12" diameter 14 gauge stainless steel

Environmental Test Standards

GREENGUARD and GREENGUARD Gold Certified by UL Environment. Product certified for low chemical emissions to UL 2818. UL.COM/GG.

Color

Base: Grey powder coat.

Options:

Fully welded 14 gauge 15" x 10" oval seat.

Assembly

Attach seat to base.

Installation

Mounts directly to floor. Floor mounting hardware not included.

Warranty

1 year limited replacement warranty

Maintenance

When cleaning stainless steel, Norix recommends the use of a cleaner made especially for stainless steel products.

Norix Group, Inc.
 1800 W. Hawthorne Lane,
 Suite N
 West Chicago, Illinois 60185
 Phone: 630-231-1331
 Toll Free: 800-234-4900
 Fax: 630-231-4343
 Email: furniture@norix.com
 www.norix.com
 ©2016 Norix Group, Inc.

Specifications subject to
 change without notice.
 ©2016 Norix Group, Inc.
 All Rights Reserved.
 Printed in U.S.A. 12/16

Max-Master® Cell Desk - Laminate Top



Model	D561
Dimensions	
Seat Height	19.75"
Height	31.5"
Width	24"
Top Depth	16"
Overall Depth	32.25"
Weight	43 lbs



Norix Group, Inc.
1800 W. Hawthorne Lane,
Suite N
West Chicago, Illinois 60185
Phone: 630-231-1331
Toll Free: 800-234-4900
Fax: 630-231-4343
Email: furniture@norix.com
www.norix.com
©2017 Norix Group, Inc.

Specifications subject to
change without notice.
©2017 Norix Group, Inc.
All Rights Reserved.
Printed in U.S.A. 1/17

Fabrication & Material

Support Leg: The curved member that supports the top has a 10" radius bend to facilitate easy cleaning beneath the table. This curved piece is fully welded to a vertical steel tube that supports the seat. The top of the curved tubes and top of the seat tubes have fully welded 6" x 6" x 1/4" thick steel mounting plates for installing top and seats. Bottom of seat tube has a fully welded mounting plate inset. For free standing applications, the inset is threaded to accommodate a tamper and skid resistant, adjustable glide with a 1/2" diameter stem. For bolt-down application, the inset has a hole for the fully enclosed tamper-resistant bolt-down system. 3" diameter, 14 gauge steel tubing.

Laminate Top: 45 lb density particle board, with embedded T-nuts for securing the top to the base. Decorative high pressure laminate sealed with a specially formulated highly durable Slammer Stone edge. Edges are radiused for safety and pressure fused to the top rendering it firmly attached and highly sanitary. 1 1/2" thick edge profile.

Super Slammer Stone Seats: 13" diameter high density color impregnated compression molded composite that is highly scratch and stain resistant. Four molded-in threaded inserts for superior metal-to-metal connection.

Made in the U.S.A.

Environmental Test Standards

GREENGUARD and GREENGUARD Gold Certified by UL Environment. Product certified for low chemical emissions to UL 2818. UL.COM/GG.

Color

Leg: Black

Top: Wilsonart® Asian Sand #7952-38, Wilsonart® Kensington Maple #10776-60, Wilsonart® Tan Echo #7941-38, Wilsonart® Solar Oak #7816-60, Wilsonart® Asian Sun #7951-38, Wilsonart® Wild Cherry #7054-60, Wilsonart® Figured Mahogany #7040-60, Wilsonart® Montana Walnut #7110-60, Wilsonart® Titanium Evolve #4810-60 and with black or color-coordinated molded edges.

Seats: Canyon, Wild Berry, Meadow, Mojave, Pine Cone, River Rock, Lagoon, Sea Spray, Raven

Options

Stainless Steel Seats: 12" diameter one-piece formed of 14 gauge steel with a 1 1/2" drop edge. Stainless steel mounting studs.

Stainless Steel Inlay Top: Durable, type 304 stainless surface sealed with a specially formulated highly durable Slammer Stone edge. Edge is radiused for safety and pressure fused to the top rendering it permanently non-removable and highly sanitary. 1 1/4" thick edge profile. Changes overall height to 31.25".

Stainless Steel Top: 11 gauge, type 304. Four stainless steel studs welded to the underside for securing the top to the base. Studs are stainless steel with maximum shear load of 5350 lbs., ultimate tensile load of 3750 lbs., and maximum fastening torque of 126 inch lbs. Changes overall height to 30.5".

Assembly

Secure leg and wall bracket to underside of top. Attach seat. Refer to manufacturers instructions for assembly.

Installation

Fasten to floor and wall. Wall mounting hardware not included.

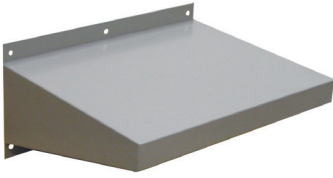
Warranty

1 year limited replacement warranty.

Maintenance

Tops: For wood products, Norix recommends using a mild wood cleaner for routine and regular cleaning maintenance. For the deep-scrub cleaning of tougher stains, marks and debris, we recommend the use of a regular-strength wood cleaner. **Legs:** When cleaning stainless steel, Norix recommends the use of a cleaner made especially for stainless steel products. **Seats:** For routine and regular cleaning maintenance, Norix recommends the use of Simple Green® or an equivalent cleaning product. For the deep-scrub cleaning of tougher stains, marks and debris, we recommend the use of Clorox® Clean-Up® Cleaner + Bleach or an equivalent cleaning solution.

Ironman® Wall Hung Cell Desk - Powder Coat



Model	D560-102
Dimensions	
Width	20"
Height	10"
Depth	16"
Weight	15 lbs



Fabrication & Material

Specially engineered with an airplane wing design to maximize strength and durability. Fiberglass insulation can be added on-site for enhanced sound deadening. Underside of desk completely sealed to prevent concealment of contraband. 16 gauge steel.

Made in the U.S.A.

Environmental Test Standards

GREENGUARD and GREENGUARD Gold Certified by UL Environment. Product certified for low chemical emissions to UL 2818. UL.COM/GG.

Color

Grey Powder Coat

Options

Stainless Steel (See separate specification sheets)

Also available in prime coat finish.

Assembly

None required

Installation

Mounts directly to wall. Hardware not included.

Warranty

1 year limited replacement warranty

Maintenance

Norix recommends the use of soap and water for both the regular cleaning maintenance and deep-scrub cleaning of powder-coated seal. When cleaning stainless steel, Norix recommends the use of a cleaner made especially for stainless steel products.

Norix Group, Inc.
 1800 W. Hawthorne Lane,
 Suite N
 West Chicago, Illinois 60185
 Phone: 630-231-1331
 Toll Free: 800-234-4900
 Fax: 630-231-4343
 Email: furniture@norix.com
 www.norix.com
 ©2016 Norix Group, Inc.

Specifications subject to
 change without notice.
 ©2016 Norix Group, Inc.
 All Rights Reserved.
 Printed in U.S.A. 12/16

Ironman® Wall Hung Cell Desk - Stainless Steel



Model	D560-401
Dimensions	
Width	20"
Height	10"
Depth	16"
Weight	15 lbs



Fabrication & Material

Specially engineered with an airplane wing design to maximize strength and durability. Fiberglass insulation can be added on-site for enhanced sound deadening. Underside of desk completely sealed to prevent concealment of contraband. 16 gauge, type 304 stainless steel. Made in the U.S.A.

Environmental Test Standards

GREENGUARD and GREENGUARD Gold Certified by UL Environment. Product certified for low chemical emissions to UL 2818. UL.COM/GG.

Color

#4 Finish

Options

Grey Powder Coat (See separate specification sheets)

Also available in prime coat finish.

Assembly

None required

Installation

Mounts directly to wall. Hardware not included.

Warranty

1 year limited replacement warranty

Maintenance

When cleaning stainless steel, Norix recommends the use of a cleaner made especially for stainless steel products.

Norix Group, Inc.
 1800 W. Hawthorne Lane,
 Suite N
 West Chicago, Illinois 60185
 Phone: 630-231-1331
 Toll Free: 800-234-4900
 Fax: 630-231-4343
 Email: furniture@norix.com
 www.norix.com
 ©2016 Norix Group, Inc.

Specifications subject to
 change without notice.
 ©2016 Norix Group, Inc.
 All Rights Reserved.
 Printed in U.S.A. 12/16