

Comfort Shield® Custody - Norix Blue



Model/Dimensions/Weight

See Additional Dimensions



Fabrication & Material

Sealed Seam Mattress with Integrated Double-Sided Pillow

11 oz/sq. ft. densified polyester fiber core with an integrated double sided pillow is encased in a fire retardant, polyurethane coated cover with radio frequency welded seams for enhanced hygiene, security and durability. Mattress is fluid, crack, peel, abrasion and bed bug resistant, anti-microbial and anti-fungal. Provides a virus barrier and is resistant to delaminating for greater infection control. Features a breathable vent that repels oil, water, blood, urine and other fluids. Core is made of non-hazardous materials and is 100% recyclable. Made in the U.S.A.

Flammability Test Standards

Compliant with the following flammability standards:

- 16 CFR Part 1633
- 16 CFR Part 1632
- California Technical Bulletin 129

Performance Test Standards

- Tested to ASTM F1566 Hexagonal Roller Mattress Durability Test
- Tested to ASTM D751 Hydrostatic Resistance Test for Coated Fabrics

Environmental Test Standards

GREENGUARD and GREENGUARD Gold Certified by UL Environment. Product certified for low chemical emissions to UL 2818. UL.COM/GG.

Color

Norix Blue

Options

Mattress is available without integrated pillow

Assembly

Shipped assembled in poly bag

Warranty

5 year limited prorated warranty against seam failure and cover material cracking. (Full warranty details available upon request.)

Maintenance

- Use hospital-grade cleaner or bleach/water solution on the entire mattress
- Completely rinse with clean water (do not submerge)
- After cleaning, dry the mattress cover thoroughly. Do not place wet mattress onto a sleep surface; moisture may cause cover fabric damage (not covered by Limited Warranty)
- Contact Norix Customer Service for a mattress patch kit to address minor punctures and tears.

Additional Dimensions

MCB4-2567	(25"W x 67"L x 4.5"H)	11.5 lbs	MCB4-3079	(30"W x 79"L x 4.5"H)	16.5 lbs
MCB4-2575	(25"W x 75"L x 4.5"H)	13 lbs	MCB4-2580	(25"W x 80"L x 4.5"H)	14 lbs
MCB4-2775	(27"W x 75"L x 4.5"H)	14 lbs	MCB4-2780	(27"W x 80"L x 4.5"H)	15 lbs
MCB4-3075	(30"W x 75"L x 4.5"H)	16 lbs	MCB4-3080	(30"W x 80"L x 4.5"H)	17 lbs
MCB4-2977	(29"W x 77"L x 4.5"H)	15.5 lbs			

Note: Dimensional tolerances are +/- one inch.

Norix Group, Inc.
 1800 W. Hawthorne Lane,
 Suite N
 West Chicago, Illinois 60185
 Phone: 630-231-1331
 Toll Free: 800-234-4900
 Fax: 630-231-4343
 Email: furniture@norix.com
 www.norix.com
 ©2016 Norix Group, Inc.

Specifications subject to
 change without notice.
 ©2016 Norix Group, Inc.
 All Rights Reserved.
 Printed in U.S.A. 12/16

Comfort Shield® Custody - Silver Secure



Model/Dimensions/Weight

See Additional Dimensions



Fabrication & Material

Sealed Seam Mattress with Integrated Double-Sided Pillow

11 oz/sq. ft. densified polyester fiber core with an integrated double sided pillow is encased in a reinforced ripstop, fire-retardant, polyurethane coated cover with radio frequency welded seams for enhanced hygiene, security and durability. Premium cover is highly-puncture resistant and inhibits tearing if puncture does occur. Mattress is fluid, crack, peel, abrasion and bed bug resistant, anti-microbial and anti-fungal. Provides a virus barrier and is resistant to tearing and delaminating for greater infection control. Features a breathable vent that repels oil, water, blood, urine and other fluids. Core is made of non-hazardous materials and is 100% recyclable. Made in the U.S.A.

Flammability Test Standards

Compliant with the following flammability standards:

- 16 CFR Part 1633
- 16 CFR Part 1632
- California Technical Bulletin 129

Performance Test Standards

- Tested to ASTM F1566 Hexagonal Roller Mattress Durability Test
- Tested to ASTM D751 Hydrostatic Resistance Test for Coated Fabrics

Environmental Test Standards

GREENGUARD and GREENGUARD Gold Certified by UL Environment. Product certified for low chemical emissions to UL 2818. UL.COM/GG.

Color

Silver

Options

Mattress is available without integrated pillow

Assembly

Shipped assembled in poly bag

Warranty

5 year limited prorated warranty against seam failure and cover material cracking. (Full warranty details available upon request.)

Maintenance

- Use hospital-grade cleaner or bleach/water solution on the entire mattress
- Completely rinse with clean water (do not submerge)
- After cleaning, dry the mattress cover thoroughly. Do not place wet mattress onto a sleep surface; moisture may cause cover fabric damage (not covered by Limited Warranty)
- Contact Norix Customer Service for a mattress patch kit to address minor punctures and tears.

Additional Dimensions

MCS4-2567	(25"W x 67"L x 4.5"H)	11.5 lbs	MCS4-3079	(30"W x 79"L x 4.5"H)	16.5 lbs
MCS4-2575	(25"W x 75"L x 4.5"H)	13 lbs	MCS4-2580	(25"W x 80"L x 4.5"H)	14 lbs
MCS4-2775	(27"W x 75"L x 4.5"H)	14 lbs	MCS4-2780	(27"W x 80"L x 4.5"H)	15 lbs
MCS4-3075	(30"W x 75"L x 4.5"H)	16 lbs	MCS4-3080	(30"W x 80"L x 4.5"H)	17 lbs
MCS4-2977	(29"W x 77"L x 4.5"H)	15.5 lbs			

Note: Dimensional tolerances are +/- one inch.

Norix Group, Inc.
 1800 W. Hawthorne Lane,
 Suite N
 West Chicago, Illinois 60185
 Phone: 630-231-1331
 Toll Free: 800-234-4900
 Fax: 630-231-4343
 Email: furniture@norix.com
 www.norix.com
 ©2016 Norix Group, Inc.

Specifications subject to
 change without notice.
 ©2016 Norix Group, Inc.
 All Rights Reserved.
 Printed in U.S.A. 12/16

Comfort Shield® Custody - Black Max



Model/Dimensions/Weight

See Additional Dimensions



Fabrication & Material

Sealed Seam Mattress with Integrated Double-Sided Pillow

11 oz/sq. ft. densified polyester fiber core with an integrated double sided pillow is encased in a fortified ripstop, fire-retardant cover with radio frequency welded seams and reinforced stitching for enhanced hygiene, security and durability. Three-ply polyurethane coated cover is highly-puncture resistant and inhibits tearing if puncture does occur. Mattress is fluid, crack, peel, abrasion and bed bug resistant, anti-microbial and anti-fungal. Provides a virus barrier and is resistant to tearing and delaminating for greater infection control. Features a breathable vent that repels oil, water, blood, urine and other fluids. Core is made of non-hazardous materials and is 100% recyclable. Made in the U.S.A.

Flammability Test Standards

Compliant with the following flammability standards:

- 16 CFR Part 1633
- 16 CFR Part 1632
- California Technical Bulletin 129

Performance Test Standards

- Tested to ASTM F1566 Hexagonal Roller Mattress Durability Test
- Tested to ASTM D751 Hydrostatic Resistance Test for Coated Fabrics

Environmental Test Standards

GREENGUARD and GREENGUARD Gold Certified by UL Environment. Product certified for low chemical emissions to UL 2818. UL.COM/GG.

Color

Black

Options

Mattress is available without integrated pillow

Assembly

Shipped assembled in poly bag

Warranty

5 year limited prorated warranty against seam failure and cover material cracking. (Full warranty details available upon request.)

Maintenance

- Use hospital-grade cleaner or bleach/water solution on the entire mattress
- Completely rinse with clean water (do not submerge)
- After cleaning, dry the mattress cover thoroughly. Do not place wet mattress onto a sleep surface; moisture may cause cover fabric damage (not covered by Limited Warranty)
- Contact Norix Customer Service for a mattress patch kit to address minor punctures and tears.

Additional Dimensions

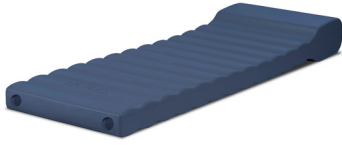
MCX4-2567	(25"W x 67"L x 4.5"H)	11.5 lbs	MCX4-3079	(30"W x 79"L x 4.5"H)	16.5 lbs
MCX4-2575	(25"W x 75"L x 4.5"H)	13 lbs	MCX4-2580	(25"W x 80"L x 4.5"H)	14 lbs
MCX4-2775	(27"W x 75"L x 4.5"H)	14 lbs	MCX4-2780	(27"W x 80"L x 4.5"H)	15 lbs
MCX4-3075	(30"W x 75"L x 4.5"H)	16 lbs	MCX4-3080	(30"W x 80"L x 4.5"H)	17 lbs
MCX4-2977	(29"W x 77"L x 4.5"H)	15.5 lbs			

Note: Dimensional tolerances are +/- one inch.

Norix Group, Inc.
 1800 W. Hawthorne Lane,
 Suite N
 West Chicago, Illinois 60185
 Phone: 630-231-1331
 Toll Free: 800-234-4900
 Fax: 630-231-4343
 Email: furniture@norix.com
 www.norix.com
 ©2016 Norix Group, Inc.

Specifications subject to
 change without notice.
 ©2016 Norix Group, Inc.
 All Rights Reserved.
 Printed in U.S.A. 12/16

Comfort Shield® Custody - Marathon



Model	MM4-2575
Dimensions	
Width	25"
Length	75.125"
Body Height	4.5"
Pillow Height	8"
Weight	68 lbs



Fabrication & Material

Seamless Mattress with Integrated Double-Sided Pillow

One-piece rotationally molded, 200 mil flexible vinyl exterior skin filled with soft 2 part water-based polyurethane foam. Unique seamless, stitchless, and stringless design is nonabsorbent and fluid resistant for enhanced hygiene, security and longevity. Smooth, exterior surface is easy to clean and sanitize. Chemically resistant to blood, vinegar, urine, feces, salt solution and chlorine solution. Made in the U.S.A.

Flammability Test Standards

Compliant with the following flammability standards:

- 16 CFR Part 1633
- 16 CFR Part 1632
- California Technical Bulletin 129

Performance Test Standards

- Tested to ASTM F1566 Hexagonal Roller Mattress Durability Test

Environmental Test Standards

GREENGUARD and GREENGUARD Gold Certified by UL Environment. Product certified for low chemical emissions to UL 2818. UL.COM/GG.

Color

Slate

Assembly

Shipped assembled in poly bag and carton

Warranty

10 year limited prorated warranty.

Maintenance

For routine and regular cleaning maintenance, Norix recommends the use of Simple Green® or an equivalent cleaning product. For the deep-scrub cleaning of tougher stains, marks and debris, we recommend the use of Clorox® Clean-Up® Cleaner + Bleach or an equivalent cleaning solution.

Norix Group, Inc.
 1800 W. Hawthorne Lane,
 Suite N
 West Chicago, Illinois 60185
 Phone: 630-231-1331
 Toll Free: 800-234-4900
 Fax: 630-231-4343
 Email: furniture@norix.com
 www.norix.com
 ©2016 Norix Group, Inc.

Specifications subject to
 change without notice.
 ©2016 Norix Group, Inc.
 All Rights Reserved.
 Printed in U.S.A. 12/16