

Ironman® K.D. Bunk System - Double Bunk



Model	B510-201
Box Dimensions	
Length	80.25"
Width	27.25"
Height	52"
Weight	260 lbs



Fabrication & Material

Universal formed steel pan. Mounting holes provided for attachment to legs or brackets. Bunks have a baked on factory applied polyester powder coat finish.

Pan: 12 gauge steel. Standard size is 27" x 80".

Legs: 10 gauge steel. 3 1/2" wide with mounting holes for attachment to pan. Floor mounting tabs are provided for bolting or welding to floor. Single leg is 16" high. Double leg is 52" high. Floor mounting tabs provided for bolting or welding to floor.

Made in the U.S.A.

Environmental Test Standards

GREENGUARD and GREENGUARD Gold Certified by UL Environment. Product certified for low chemical emissions to UL 2818. UL.COM/GG.

Color

Grey

Options

Rail sets and locking plates for property boxes. Safety rail. Ladder. Prime Coat. 10 gauge steel pan.

Assembly

Attach legs or brackets to pan with furnished bolts. 1/2"-13 x 1 1/4" steel bolts treated with Loctite® Dri-Loc® to attach legs or brackets to pan.

Installation

Weld or bolt assembled unit to wall plates or bolt to floor. Floor and wall mounting hardware not included.

Warranty

1 year limited replacement warranty.

Maintenance

When cleaning stainless steel, Norix recommends the use of a cleaner made especially for stainless steel products.

Norix Group, Inc.
 1800 W. Hawthorne Lane,
 Suite N
 West Chicago, Illinois 60185
 Phone: 630-231-1331
 Toll Free: 800-234-4900
 Fax: 630-231-4343
 Email: furniture@norix.com
 www.norix.com
 ©2016 Norix Group, Inc.

Specifications subject to
 change without notice.
 ©2016 Norix Group, Inc.
 All Rights Reserved.
 Printed in U.S.A. 12/16

Ironman® K.D. Bunk System - Single Bunk



Model	B510-101
Box Dimensions	
Length	80.25"
Width	27.25"
Height	16.26"
Weight	120 lbs



Fabrication & Material

Universal formed steel pan. Mounting holes provided for attachment to legs or brackets. Bunks have a baked on factory applied polyester powder coat finish.

Pan: 12 gauge steel. Standard size is 27" x 80".

Legs: 10 gauge steel. 3 1/2" wide with mounting holes for attachment to pan. Floor mounting tabs are provided for bolting or welding to floor. Single leg is 16" high. Double leg is 52" high. Floor mounting tabs provided for bolting or welding to floor.

Made in the U.S.A.

Environmental Test Standards

GREENGUARD and GREENGUARD Gold Certified by UL Environment. Product certified for low chemical emissions to UL 2818. UL.COM/GG.

Color

Grey

Options

Rail sets and locking plates for property boxes. Safety rail. Ladder. Prime Coat. 10 gauge steel pan.

Assembly

Attach legs or brackets to pan with furnished bolts. 1/2"-13 x 1 1/4" steel bolts treated with Loctite® Dri-Loc® to attach legs or brackets to pan.

Installation

Weld or bolt assembled unit to wall plates or bolt to floor. Floor and wall mounting hardware not included.

Warranty

1 year limited replacement warranty.

Maintenance

When cleaning stainless steel, Norix recommends the use of a cleaner made especially for stainless steel products.

Norix Group, Inc.
 1800 W. Hawthorne Lane,
 Suite N
 West Chicago, Illinois 60185
 Phone: 630-231-1331
 Toll Free: 800-234-4900
 Fax: 630-231-4343
 Email: furniture@norix.com
 www.norix.com
 ©2016 Norix Group, Inc.

Specifications subject to
 change without notice.
 ©2016 Norix Group, Inc.
 All Rights Reserved.
 Printed in U.S.A. 12/16

Ironman® K.D. Bunk System - Wall Mount Bunk



Model	B520-101
Box Dimensions	
Length	80.25"
Width	29.25"
Height	13"
Weight	130 lbs



Fabrication & Material

Universal formed steel pan. Mounting holes provided for attachment to legs or brackets. Bunks have a baked on factory applied polyester powder coat finish.

Pan: 12 gauge steel. Standard size is 27" x 80".

Wall Mounted Bracket: 7 gauge steel. Can be mounted above or below pan (specify when ordering).

Made in the U.S.A.

Environmental Test Standards

GREENGUARD and GREENGUARD Gold Certified by UL Environment. Product certified for low chemical emissions to UL 2818. UL.COM/GG.

Color

Grey

Options

Rail sets and locking plates for property boxes. Safety rail. Ladder. Prime Coat. 10 gauge steel pan.

Assembly

Attach legs or brackets to pan with furnished bolts. 1/2"-13 x 1 1/4" steel bolts treated with Loctite® Dri-Loc® to attach legs or brackets to pan.

Installation

Weld or bolt assembled unit to wall plates or bolt to floor. Floor and wall mounting hardware not included.

Warranty

1 year limited replacement warranty.

Maintenance

When cleaning stainless steel, Norix recommends the use of a cleaner made especially for stainless steel products.

Norix Group, Inc.
1800 W. Hawthorne Lane,
Suite N
West Chicago, Illinois 60185
Phone: 630-231-1331
Toll Free: 800-234-4900
Fax: 630-231-4343
Email: furniture@norix.com
www.norix.com
©2016 Norix Group, Inc.

Specifications subject to
change without notice.
©2016 Norix Group, Inc.
All Rights Reserved.
Printed in U.S.A. 12/16

Ironman® Triple Bunk



Model B510-300

Box Dimensions

Length 80.625"
 Width 27.625"
 Height 82"
 Bottom Bunk 14"
 Middle Bunk 45"
 Top Bunk 76"

Weight 380 lbs

**Fabrication & Material**

Universal formed steel pan. Bunks have a baked on factory applied polyester powder coat finish. Built in safety rails and ladder.

Pan: 12 gauge steel. Standard size is 27" x 80".

Legs: 2" x 2" x 3/16" standard angle with bolt down tabs.

Ladder Rung & Safety Rails: 2" x 2" x 3/16" standard angle.

Made in the U.S.A.

Environmental Test Standards

GREENGUARD and GREENGUARD Gold Certified by UL Environment. Product certified for low chemical emissions to UL 2818. UL.COM/GG.

Color

Grey

Options

Rail sets and locking plates for property boxes. 10 gauge steel pan. Prime coat finish. Towel hooks.

Assembly

None required

Installation

Weld or bolt unit to floor. Floor mounting hardware not included.

Warranty

1 year limited replacement warranty.

Maintenance

When cleaning stainless steel, Norix recommends the use of a cleaner made especially for stainless steel products.

Norix Group, Inc.
 1800 W. Hawthorne Lane,
 Suite N
 West Chicago, Illinois 60185
 Phone: 630-231-1331
 Toll Free: 800-234-4900
 Fax: 630-231-4343
 Email: furniture@norix.com
 www.norix.com
 ©2016 Norix Group, Inc.

Specifications subject to
 change without notice.
 ©2016 Norix Group, Inc.
 All Rights Reserved.
 Printed in U.S.A. 12/16

Ironman® Welded Bunk System - Double Bunk



Model	B510-222
Box Dimensions	
Length	80.25"
Width	27.25"
Height	52"
Weight	260 lbs



Fabrication & Material

Universal formed steel pan. Bunks have a baked on factory applied polyester powder coat finish.

Pan: 12 gauge steel. Standard size is 27" x 80".

Legs: 2" x 2" x 3/16" standard angle with bolt down tabs. Floor mounting tabs are provided for bolting or welding to floor. Single leg is 16" high. Double leg is 52" high.

Made in the U.S.A.

Environmental Test Standards

GREENGUARD and GREENGUARD Gold Certified by UL Environment. Product certified for low chemical emissions to UL 2818. UL.COM/GG.

Color

Grey

Options

Rail sets and locking hasps for property boxes. Towel Hooks. Mid Rail. Ladder. Safety Rail. Prime Coat. 10 gauge steel pan.

Assembly

None required

Installation

Weld or bolt unit to wall plates or bolt to floor.

Floor and wall mounting hardware not included.

Warranty

1 year limited replacement warranty.

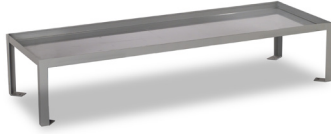
Maintenance

When cleaning stainless steel, Norix recommends the use of a cleaner made especially for stainless steel products.

Norix Group, Inc.
 1800 W. Hawthorne Lane,
 Suite N
 West Chicago, Illinois 60185
 Phone: 630-231-1331
 Toll Free: 800-234-4900
 Fax: 630-231-4343
 Email: furniture@norix.com
 www.norix.com
 ©2016 Norix Group, Inc.

Specifications subject to
 change without notice.
 ©2016 Norix Group, Inc.
 All Rights Reserved.
 Printed in U.S.A. 12/16

Ironman® Welded Bunk System - Single Bunk



Model	B510-160
Box Dimensions	
Length	80.25"
Width	27.25"
Height	16.25"
Weight	120 lbs



Fabrication & Material

Universal formed steel pan. Bunks have a baked on factory applied polyester powder coat finish.

Pan: 12 gauge steel. Standard size is 27" x 80".

Legs: 2" x 2" x 3/16" standard angle with bolt down tabs. Floor mounting tabs are provided for bolting or welding to floor. Single leg is 16" high. Double leg is 52" high.

Made in the U.S.A.

Environmental Test Standards

GREENGUARD and GREENGUARD Gold Certified by UL Environment. Product certified for low chemical emissions to UL 2818. UL.COM/GG.

Color

Grey

Options

Rail sets and locking hasps for property boxes. Towel Hooks. Mid Rail. Ladder. Safety Rail. Prime Coat. 10 gauge steel pan.

Assembly

None required

Installation

Weld or bolt unit to wall plates or bolt to floor.

Floor and wall mounting hardware not included.

Warranty

1 year limited replacement warranty.

Maintenance

When cleaning stainless steel, Norix recommends the use of a cleaner made especially for stainless steel products.

Norix Group, Inc.
 1800 W. Hawthorne Lane,
 Suite N
 West Chicago, Illinois 60185
 Phone: 630-231-1331
 Toll Free: 800-234-4900
 Fax: 630-231-4343
 Email: furniture@norix.com
 www.norix.com
 ©2016 Norix Group, Inc.

Specifications subject to
 change without notice.
 ©2016 Norix Group, Inc.
 All Rights Reserved.
 Printed in U.S.A. 12/16

Ironman® Welded Bunk System - Wall Mount Bunk



Model B525-104

Box Dimensions

Length 80.25"

Width 29.25"

Height 13"

Weight 130 lbs



Fabrication & Material

Universal formed steel pan. Bunks have a baked on factory applied polyester powder coat finish.

Pan: 12 gauge steel. Standard size is 27" x 80".

Wall Mounted Bracket: 7 gauge steel.

Made in the U.S.A.

Environmental Test Standards

GREENGUARD and GREENGUARD Gold Certified by UL Environment. Product certified for low chemical emissions to UL 2818. UL.COM/GG.

Color

Grey

Options

Rail sets and locking hasps for property boxes. Towel Hooks. Mid Rail. Ladder. Safety Rail. Prime Coat. 10 gauge steel pan.

Assembly

None required

Installation

Weld or bolt unit to wall plates or bolt to floor. Floor and wall mounting hardware not included.

Warranty

1 year limited replacement warranty.

Maintenance

When cleaning stainless steel, Norix recommends the use of a cleaner made especially for stainless steel products.

Norix Group, Inc.
 1800 W. Hawthorne Lane,
 Suite N
 West Chicago, Illinois 60185
 Phone: 630-231-1331
 Toll Free: 800-234-4900
 Fax: 630-231-4343
 Email: furniture@norix.com
 www.norix.com
 ©2016 Norix Group, Inc.

Specifications subject to
 change without notice.
 ©2016 Norix Group, Inc.
 All Rights Reserved.
 Printed in U.S.A. 12/16