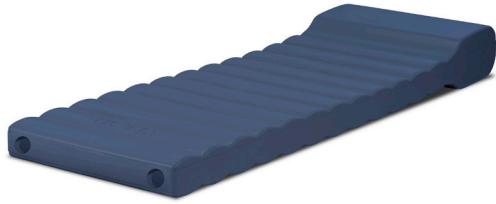


SPECIFICATIONS



Model

MM4-2575

Weight

68.5 - 74.5 lbs

*Intended for indoor use only

Dimensions

Width	25"
Length	75.1"
Body Height	4.5"
Pillow Height	8"



DETAILS

Color

Slate

*Due to differences in monitors, printers and materials, actual product colors may vary. Color chips are available for more accurate depiction of color.

Assembly

Shipped assembled in poly bag and carton

Fabrication & Material

Seamless Mattress with Integrated Double-Sided Pillow

One-piece rotationally molded, 200 mil flexible vinyl exterior skin filled with soft 2 part water-based polyurethane foam. Unique seamless, stitchless, and stringless design is nonabsorbent and fluid resistant for enhanced hygiene, security and longevity. Smooth, exterior surface is easy to clean and sanitize. Chemically resistant to blood, vinegar, urine, feces, salt solution and chlorine solution. Made in the U.S.A.

Warranty

10 year limited prorated warranty.

Maintenance

For routine and regular cleaning maintenance, Norix recommends the use of Simple Green® or an equivalent cleaning product. For the deep-scrub cleaning of tougher stains, marks and debris, we recommend the use of Clorox® Clean-Up® Cleaner + Bleach or an equivalent cleaning solution.

TESTING

Environmental Test Standards

GREENGUARD and GREENGUARD Gold Certified by UL Environment. Product certified for low chemical emissions to UL 2818. UL.COM/GG.

Flammability Test Standards

Compliant with the following flammability standards:

- 16 CFR Part 1633
- 16 CFR Part 1632