

SPECIFICATIONS



Model	Dimensions	Weight
MCB4-2567	(25"W x 67"L x 4.5"H)	11.5 lbs
MCB4-2575	(25"W x 75"L x 4.5"H)	13 lbs
MCB4-2580	(25"W x 80"L x 4.5"H)	14 lbs
MCB4-2775	(27"W x 75"L x 4.5"H)	14 lbs
MCB4-2780	(27"W x 80"L x 4.5"H)	15 lbs
MCB4-2977	(29"W x 77"L x 4.5"H)	15.5 lbs
MCB4-3075	(30"W x 75"L x 4.5"H)	16 lbs
MCB4-3079	(30"W x 79"L x 4.5"H)	16.5 lbs
MCB4-3080	(30"W x 80"L x 4.5"H)	17 lbs

*Intended for indoor use only

Note: Dimensional tolerances are +/- one inch.



DETAILS

Color

Norix Blue

*Due to differences in monitors, printers and materials, actual product colors may vary. Color chips are available for more accurate depiction of color.

Options

Mattress is available without integrated pillow

Assembly

Shipped assembled in poly bag

Fabrication & Material

Sealed Seam Mattress with Integrated Double-Sided Pillow

11 oz/sq. ft. densified polyester fiber core with an integrated double sided pillow is encased in a fire retardant, polyurethane coated cover with radio frequency welded seams for enhanced hygiene, security and durability. Mattress is fluid, crack, peel, abrasion and bed bug resistant, anti-microbial and anti-fungal. Provides a virus barrier and is resistant to delaminating for greater infection control. Features a breathable vent that repels oil, water, blood, urine and other fluids. Core is made of non-hazardous materials. Made in the U.S.A.

Warranty

5 year limited prorated warranty against seam failure and cover material cracking. (Full warranty details available upon request.)

Maintenance

- Use hospital-grade cleaner or bleach/water solution on the entire mattress.
- Completely rinse with clean water (do not submerge).
- After cleaning, dry the mattress cover thoroughly. Do not place wet mattress onto a sleep surface; moisture may cause cover fabric damage (not covered by Limited Warranty).
- Contact Norix Customer Service for a mattress patch kit to address minor punctures and tears.

TESTING

Performance Test Standards

- Tested to ASTM F1566 Hexagonal Roller Mattress Durability Test
- Tested to ASTM D751 Hydrostatic Resistance Test for Coated Fabrics

Environmental Test Standards

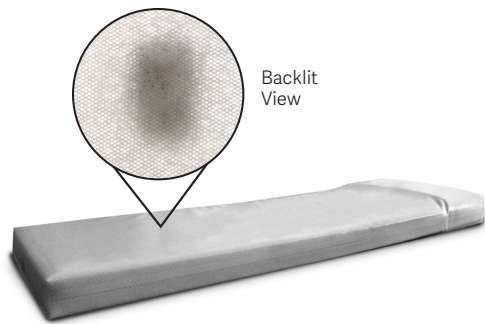
GREENGUARD and GREENGUARD Gold Certified by UL Environment. Product certified for low chemical emissions to UL 2818. UL.COM/GG.

Flammability Test Standards

Compliant with the following flammability standards:

- 16 CFR Part 1633
- 16 CFR Part 1632
- California Technical Bulletin 129

SPECIFICATIONS



Model	Dimensions	Weight
MCC5-2575	(25"W x 75"L x 4"H)	19.2 lbs
MCC5-2775	(27"W x 75"L x 4"H)	19.2 lbs
MCC5-3075	(30"W x 75"L x 4"H)	19.2 lbs

Note: Dimensional tolerances are +/- one inch.

*Intended for indoor use only



DETAILS

Color

Norix Clear

*Due to differences in monitors, printers and materials, actual product colors may vary. Color chips are available for more accurate depiction of color.

Options

Mattress is available without integrated pillow

Assembly

Shipped assembled in poly bag

Fabrication & Material

Sealed Seam Mattress with Integrated Double-Sided Pillow. 11 oz/sq. ft. TPU coated polyester cover over air string core in a fire retardant cover with radio frequency welded seams for enhanced hygiene, security and durability. Mattress is fluid, crack, peel, abrasion and bed bug resistant, anti-microbial and anti-fungal. Provides a virus barrier and is resistant to delaminating for greater infection control. Features a breathable vent that repels oil, water, blood, urine and other fluids. Core is made of non-hazardous materials. Made in the U.S.A.

Warranty

5 year limited prorated warranty against seam failure and cover material cracking. (Full warranty details available upon request.)

Maintenance

- Use hospital-grade cleaner or bleach/water solution on the entire mattress.
- Completely rinse with clean water (do not submerge).
- After cleaning, dry the mattress cover thoroughly. Do not place wet mattress onto a sleep surface; moisture may cause cover fabric damage (not covered by Limited Warranty).
- Contact Norix Customer Service for a mattress patch kit to address minor punctures and tears.

TESTING

Performance Test Standards

- Tested to ASTM F1566 Hexagonal Roller Mattress Durability Test
- Tested to ASTM D751 Hydrostatic Resistance Test for Coated Fabrics

Environmental Test Standards

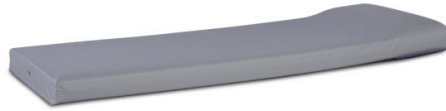
GREENGUARD and GREENGUARD Gold Certified by UL Environment. Product certified for low chemical emissions to UL 2818. UL.COM/GG.

Flammability Test Standards

Compliant with the following flammability standards:

- 16 CFR Part 1633
- 16 CFR Part 1632
- California Technical Bulletin 129

SPECIFICATIONS



Model	Dimensions	Weight
MCS4-2567	(25"W x 67"L x 4.5"H)	11.5 lbs
MCS4-2575	(25"W x 75"L x 4.5"H)	13 lbs
MCS4-2580	(25"W x 80"L x 4.5"H)	14 lbs
MCS4-2775	(27"W x 75"L x 4.5"H)	14 lbs
MCS4-2780	(27"W x 80"L x 4.5"H)	15 lbs
MCS4-2977	(29"W x 77"L x 4.5"H)	15.5 lbs
MCS4-3075	(30"W x 75"L x 4.5"H)	16 lbs
MCS4-3079	(30"W x 79"L x 4.5"H)	16.5 lbs
MCS4-3080	(30"W x 80"L x 4.5"H)	17 lbs

*Intended for indoor use only

Note: Dimensional tolerances are +/- one inch.



DETAILS

Color

Silver

*Due to differences in monitors, printers and materials, actual product colors may vary. Color chips are available for more accurate depiction of color.

Options

Mattress is available without integrated pillow

Assembly

Shipped assembled in poly bag

Fabrication & Material

Sealed Seam Mattress with Integrated Double-Sided Pillow

11 oz/sq. ft. densified polyester fiber core with an integrated double-sided pillow is encased in a reinforced ripstop, fire-retardant, polyurethane coated cover with radio frequency welded seams for enhanced hygiene, security and durability. Premium cover is highly puncture resistant and inhibits tearing if puncture does occur. Mattress is fluid, crack, peel, abrasion and bed bug resistant, anti-microbial and anti-fungal. Provides a virus barrier and is resistant to tearing and delaminating for greater infection control. Features a breathable vent that repels oil, water, blood, urine and other fluids. Core is made of non-hazardous materials. Made in the U.S.A.

Warranty

5 year limited prorated warranty against seam failure and cover material cracking (Full warranty details available upon request).

Maintenance

- Use hospital-grade cleaner or bleach/water solution on the entire mattress.
- Completely rinse with clean water (do not submerge).
- After cleaning, dry the mattress cover thoroughly. Do not place wet mattress onto a sleep surface; moisture may cause cover fabric damage (not covered by Limited Warranty).
- Contact Norix Customer Service for a mattress patch kit to address minor punctures and tears.

TESTING

Performance Test Standards

- Tested to ASTM F1566 Hexagonal Roller Mattress Durability Test
- Tested to ASTM D751 Hydrostatic Resistance Test for Coated Fabrics

Environmental Test Standards

GREENGUARD and GREENGUARD Gold Certified by UL Environment. Product certified for low chemical emissions to UL 2818. UL.COM/GG.

Flammability Test Standards

Compliant with the following flammability standards:

- 16 CFR Part 1633
- 16 CFR Part 1632
- California Technical Bulletin 129

SPECIFICATIONS



Model	Dimensions	Weight
MCX4-2567	(25"W x 67"L x 4.5"H)	11.5 lbs
MCX4-2575	(25"W x 75"L x 4.5"H)	13 lbs
MCX4-2580	(25"W x 80"L x 4.5"H)	14 lbs
MCX4-2775	(27"W x 75"L x 4.5"H)	14 lbs
MCX4-2780	(27"W x 80"L x 4.5"H)	15 lbs
MCX4-3075	(30"W x 75"L x 4.5"H)	16 lbs
MCX4-3079	(30"W x 79"L x 4.5"H)	16.5 lbs
MCX4-3080	(30"W x 80"L x 4.5"H)	17 lbs
MCX4-2977	(29"W x 77"L x 4.5"H)	15.5 lbs

*Intended for indoor use only

Note: Dimensional tolerances are +/- one inch.



DETAILS

Color

Black

*Due to differences in monitors, printers and materials, actual product colors may vary. Color chips are available for more accurate depiction of color.

Options

Mattress is available without integrated pillow

Assembly

Shipped assembled in poly bag

Fabrication & Material

Sealed Seam Mattress with Integrated Double-Sided Pillow

11 oz/sq. ft. densified polyester fiber core with an integrated double-sided pillow is encased in a fortified ripstop, fire-retardant cover with radio frequency welded seams and reinforced stitching for enhanced hygiene, security and durability. Triple polyurethane coated cover is highly puncture resistant and inhibits tearing if puncture does occur. Mattress is fluid, crack, peel, abrasion and bed bug resistant, anti-microbial and anti-fungal. Provides a virus barrier and is resistant to tearing and delaminating for greater infection control. Features a breathable vent that repels oil, water, blood, urine and other fluids. Core is made of non-hazardous materials. Made in the U.S.A.

Warranty

5 year limited prorated warranty against seam failure and cover material cracking (Full warranty details available upon request).

Maintenance

- Use hospital-grade cleaner or bleach/water solution on the entire mattress.
- Completely rinse with clean water (do not submerge).
- After cleaning, dry the mattress cover thoroughly. Do not place wet mattress onto a sleep surface; moisture may cause cover fabric damage (not covered by Limited Warranty).
- Contact Norix Customer Service for a mattress patch kit to address minor punctures and tears.

TESTING

Performance Test Standards

- Tested to ASTM F1566 Hexagonal Roller Mattress Durability Test
- Tested to ASTM D751 Hydrostatic Resistance Test for Coated Fabrics

Environmental Test Standards

GREENGUARD and GREENGUARD Gold Certified by UL Environment. Product certified for low chemical emissions to UL 2818. UL.COM/GG.

Flammability Test Standards

Compliant with the following flammability standards:

- 16 CFR Part 1633
- 16 CFR Part 1632
- California Technical Bulletin 129

SPECIFICATIONS



Model

MM4-2575

Weight

68.5 - 74.5 lbs

*Intended for indoor use only

Dimensions

Width	25"
Length	75.1"
Body Height	4.5"
Pillow Height	8"



DETAILS

Color

Slate

*Due to differences in monitors, printers and materials, actual product colors may vary. Color chips are available for more accurate depiction of color.

Assembly

Shipped assembled in poly bag and carton

Fabrication & Material

Seamless Mattress with Integrated Double-Sided Pillow

One-piece rotationally molded, 200 mil flexible vinyl exterior skin filled with soft 2 part water-based polyurethane foam. Unique seamless, stitchless, and stringless design is nonabsorbent and fluid resistant for enhanced hygiene, security and longevity. Smooth, exterior surface is easy to clean and sanitize. Chemically resistant to blood, vinegar, urine, feces, salt solution and chlorine solution. Made in the U.S.A.

Warranty

10 year limited prorated warranty.

Maintenance

For routine and regular cleaning maintenance, Norix recommends the use of Simple Green® or an equivalent cleaning product. For the deep-scrub cleaning of tougher stains, marks and debris, we recommend the use of Clorox® Clean-Up® Cleaner + Bleach or an equivalent cleaning solution.

TESTING

Environmental Test Standards

GREENGUARD and GREENGUARD Gold Certified by UL Environment. Product certified for low chemical emissions to UL 2818. UL.COM/GG.

Flammability Test Standards

Compliant with the following flammability standards:

- 16 CFR Part 1633
- 16 CFR Part 1632