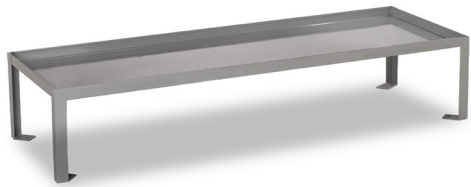


SPECIFICATIONS



Model

B510-160

Weight

120 lbs

*Intended for indoor use only

Dimensions

Length 80.6"

Width 27.6"

Height 16"

Recommended Mattress

27"x80"



DETAILS

Color

Grey

Options

Rail sets and locking hasps for property boxes, Towel Hooks, Mid Rail, Safety Rail, Prime Coat, 10 gauge steel pan

Assembly

None required

Fabrication & Material

Universal formed steel pan. Bunks have a baked-on factory-applied polyester powder coat finish.

Pan: 12 gauge steel. Standard size is 27" x 80"

Legs: 2" x 2" x 3/16" standard angle with bolt down tabs. Floor mounting tabs are provided for bolting or welding to floor. Single leg is 16" high. Double leg is 52" high. Made in the U.S.A.

Installation

Weld or bolt unit to wall plates or bolt to floor. Floor and wall mounting hardware not included.

Warranty

1 year limited replacement warranty

Maintenance

Norix recommends the use of soap and water for both the regular cleaning maintenance and deep-scrub cleaning of powder coated steel.

TESTING

Environmental Test Standards

GREENGUARD and GREENGUARD Gold Certified by UL Environment. Product certified for low chemical emissions to UL 2818. UL.COM/GG.

SPECIFICATIONS



Model

B510-222

Weight

260 lbs

*Intended for indoor use only

Dimensions

Length 80.6"

Width 27.6"

Height 52"

Recommended Mattress

27"x80"



DETAILS

Color

Grey

Options

Rail sets and locking hasps for property boxes, Towel Hooks, Mid Rail, Ladder, Safety Rail, Prime Coat, 10 gauge steel pan

Assembly

None required

Fabrication & Material

Universal formed steel pan. Bunks have a baked-on factory-applied polyester powder coat finish.

Pan: 12 gauge steel. Standard size is 27" x 80"

Legs: 2" x 2" x 3/16" standard angle with bolt down tabs. Floor mounting tabs are provided for bolting or welding to floor. Single leg is 16" high. Double leg is 52" high. Made in the U.S.A.

Installation

Weld or bolt unit to wall plates or bolt to floor. Floor and wall mounting hardware not included.

Warranty

1 year limited replacement warranty

Maintenance

Norix recommends the use of soap and water for both the regular cleaning maintenance and deep-scrub cleaning of powder coated steel.

TESTING

Environmental Test Standards

GREENGUARD and GREENGUARD Gold Certified by UL Environment. Product certified for low chemical emissions to UL 2818. UL.COM/GG.

SPECIFICATIONS



Model

B525-104

Weight

130 lbs

*Intended for indoor use only

Dimensions

Length 80.3"

Width 29.3"

Height 13"

Recommended Mattress

27"x80"



DETAILS

Color

Grey

Options

Rail sets and locking hasps for property boxes, Towel Hooks, Mid Rail, Ladder, Safety Rail, Prime Coat, 10 gauge steel pan

Assembly

None required

Fabrication & Material

Universal formed steel pan. Bunks have a baked-on factory-applied polyester powder coat finish.

Pan: 12 gauge steel. Standard size is 27" x 80"

Wall Mounted Bracket: 7 gauge steel

Made in the U.S.A.

Installation

Weld or bolt unit to wall plates. Wall mounting hardware not included.

Warranty

1 year limited replacement warranty

Maintenance

Norix recommends the use of soap and water for both the regular cleaning maintenance and deep-scrub cleaning of powder coated steel.

TESTING

Environmental Test Standards

GREENGUARD and GREENGUARD Gold Certified by UL Environment. Product certified for low chemical emissions to UL 2818. UL.COM/GG.