

# "L" Shaped Security Grab Bars



## SPECIFICATIONS



Model	Dimensions	Weight	Dimensions	
IGS-1833-3	(18" x 33")	8 lbs	Height	3.1"
IGS-3856-3	(38" x 56")	15 lbs	Depth	3"

\*Intended for indoor use only



## DETAILS

### Options

Right or left hand models

### Assembly

Shipped assembled

### Fabrication & Material

3 1/8" dia. 11 gauge type 304 stainless steel flanges are heliarc welded to 1 1/2" O.D. 18 gauge seamless tube. Suicide resistant 11 gauge closure plate is also heliarc welded to edge between tube and wall. Brushed stainless steel finish.

### Installation

Norix only recommends its products to be attached to solid concrete surfaces. For all other applications consult your professional installer for proper attachment. Installation hardware not supplied by Norix.

### Warranty

1 year limited replacement warranty

### Maintenance

When cleaning stainless steel, Norix recommends the use of a cleaner made especially for stainless steel products.

## TESTING

### Environmental Test Standards

GREENGUARD and GREENGUARD Gold Certified by UL Environment. Product certified for low chemical emissions to UL 2818. UL.COM/GG.

## SPECIFICATIONS



Model	Weight	Width	Dimensions	
IGS-18-3	2.5 lbs	18"	Height	3.1"
IGS-24-3	3.7 lbs	24"	Depth	3"
IGS-36-3	5.2 lbs	36"		
IGS-42-3	5.9 lbs	42"		
IGS-48-3	6.9 lbs	48"		

\*Intended for indoor use only



## DETAILS

### Options

18", 24", 36", 42" and 48" lengths

### Assembly

Shipped assembled

### Fabrication & Material

3 1/8" dia. 11 gauge type 304 stainless steel flanges are heliarc welded to 1 1/2" O.D. 18 gauge seamless tube. Suicide resistant 11 gauge closure plate is also heliarc welded to edge between tube and wall. Brushed stainless steel finish.

### Installation

Norix only recommends its products to be attached to solid concrete surfaces. For all other applications consult your professional installer for proper attachment. Installation hardware not supplied by Norix.

### Warranty

1 year limited replacement warranty

### Maintenance

When cleaning stainless steel, Norix recommends the use of a cleaner made especially for stainless steel products.

## TESTING

### Environmental Test Standards

GREENGUARD and GREENGUARD Gold Certified by UL Environment. Product certified for low chemical emissions to UL 2818. UL.COM/GG.

## SPECIFICATIONS



### Model

ISS-200

### Weight

85.5 lbs

### Dimensions

Width 36.3"

Height 25.9"

Depth 25.9"

\*Intended for indoor use only



## DETAILS

### Assembly

Unit shipped as two separate assemblies.  
Some assembly required on-site.

### Fabrication & Material

Cut, formed and welded steel and stainless steel frame to fit wall opening, with 1/2" diameter solid stainless steel hinge. Made in the U.S.A.

### Installation

Recommend wall mount assembly installed during wall construction. Mounting hardware not included. Folding seat assembly attaches to wall mount assembly using included security hardware. Handing field reversible.

### Warranty

1 year limited replacement warranty

### Maintenance

When cleaning stainless steel, Norix recommends the use of a cleaner made especially for stainless steel products.

## TESTING

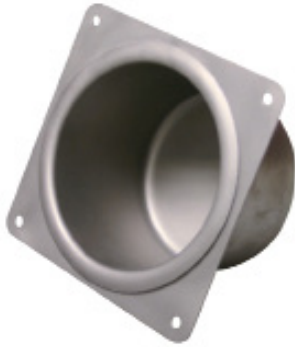
### Environmental Test Standards

GREENGUARD and GREENGUARD Gold Certified by UL Environment. Product certified for low chemical emissions to UL 2818. UL.COM/GG.

### Performance Test Standards

Product tested to 700 lbs static load

## SPECIFICATIONS

**Model**

ITP-110

**Weight**

2 lbs

**Dimensions**

Height 7"

Width 7"

Depth 4.5"

Opening Dia 5.4"

\*Intended for indoor use only

## DETAILS

**Assembly**

Shipped assembled.

**Fabrication & Material**

One-piece drawn 16 gauge type 304 stainless steel seamless well is welded to 14 gauge stainless flange to ensure tight fit to wall surface. Bead blasted satin finish.

**Installation**

Norix only recommends its products to be attached to solid concrete surfaces. For all other applications consult your professional installer for proper attachment. Installation hardware not supplied by Norix.

**Warranty**

1 year limited replacement warranty

**Maintenance**

When cleaning stainless steel, Norix recommends the use of a cleaner made especially for stainless steel products.

## SPECIFICATIONS

**Model**

ITH-110

**Weight**

2 lbs

**Dimensions**

Height 5"

Width 5"

Depth 1.3"

\*Intended for indoor use only

## DETAILS

**Assembly**

Shipped assembled.

**Fabrication & Material**

Backplate: One-piece formed and ground smooth 14 gauge type 304 stainless steel.

Safety Hook: Fabricated from cast & machined stainless steel with stainless steel ball and spring. Brushed stainless steel finish.

**Installation**

Norix only recommends its products to be attached to solid concrete surfaces. For all other applications consult your professional installer for proper attachment. Installation hardware not supplied by Norix.

**Warranty**

1 year limited replacement warranty

**Maintenance**

When cleaning stainless steel, Norix recommends the use of a cleaner made especially for stainless steel products.

# Towel Hook - 4 Strip Front Mount



## SPECIFICATIONS



### Model

ITS-410

### Weight

5.5 lbs

### Dimensions

Height 5.5"

Width 18"

Depth 1.3"

\*Intended for indoor use only

## DETAILS

### Assembly

Shipped assembled

### Fabrication & Material

Backplate: One piece formed and ground smooth 14 gauge type 304 stainless steel.

Safety Hook: Fabricated from cast & machined stainless steel with stainless steel ball and spring. Brushed stainless steel finish.

### Installation

Norix only recommends its products to be attached to solid concrete surfaces. For all other applications consult your professional installer for proper attachment. Installation hardware not supplied by Norix.

### Warranty

1 year limited replacement warranty

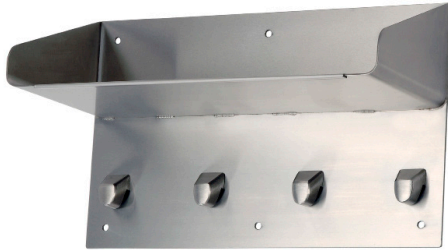
### Maintenance

When cleaning stainless steel, Norix recommends the use of a cleaner made especially for stainless steel products.

# Towel Hook - 4 Strip With Shelf

# NORIX®

## SPECIFICATIONS



### Model

S565-529

### Weight

14.5 lbs

### Dimensions

Height 11"

Width 18"

Depth 8"

\*Intended for indoor use only

## DETAILS

### Assembly

Shipped assembled

### Fabrication & Material

Backplate: One piece formed and ground smooth 14 gauge type 304 stainless steel.

Safety Hook: Fabricated from cast & machined stainless steel with stainless steel ball and spring. Brushed stainless steel finish.

### Installation

Norix only recommends its products to be attached to solid concrete surfaces. For all other applications consult your professional installer for proper attachment. Installation hardware not supplied by Norix.

### Warranty

1 year limited replacement warranty

### Maintenance

When cleaning stainless steel, Norix recommends the use of a cleaner made especially for stainless steel products.

## SPECIFICATIONS

**Model**

S565-550

**Weight**

7 lbs

\*Intended for indoor use only

**Dimensions**

Opening Height 5"

Opening Width 16"

Overall Height 7.5"

Overall Width 18"



## DETAILS

**Assembly**

Shipped assembled

**Fabrication & Material**

Formed and welded 16 gauge type 304 stainless steel. Exposed surfaces polished to #4 finish. Brushed stainless steel frame and satin interior. Made in the U.S.A.

**Installation**

Install in wall opening. Back of shelf has welded anchor nuts to receive threaded studs.

**Warranty**

1 year limited replacement warranty

**Maintenance**

When cleaning stainless steel, Norix recommends the use of a cleaner made especially for stainless steel products.



## SPECIFICATIONS

**Model**

R565-411

**Weight**

2.6 lbs

\*Intended for indoor use only

**Dimensions**

Mirror Width 9.6"

Mirror Height 15.6"

Overall Width 11.3"

Overall Height 17.3"

Depth 0.25"

## DETAILS

**Options**

Back mounting plate. Available with embed.

**Assembly**

None required

**Fabrication & Material**

One-piece stamping with raised frame. 18 gauge, type 430 stainless steel. Mirror surface highly polished. #8 finish.

**Installation**

Norix only recommends its products to be attached to solid concrete surfaces. For all other applications consult your professional installer for proper attachment. Installation hardware not supplied by Norix.

**Warranty**

1 year limited replacement warranty

**Maintenance**

When cleaning stainless steel, Norix recommends the use of a cleaner made especially for stainless steel products.

## SPECIFICATIONS



### Model

R565-410

### Weight

1.4 lbs

\*Intended for indoor use only

### Dimensions

Mirror Width 7.8"

Mirror Height 9.5"

Overall Width 9.5"

Overall Height 11.3"

Depth 0.25"

## DETAILS

### Options

Back mounting plate. Available with embed.

### Assembly

None required

### Fabrication & Material

One-piece stamping with raised frame. 18 gauge, type 430 stainless steel. Mirror surface highly polished. #8 finish.

### Installation

Norix only recommends its products to be attached to solid concrete surfaces. For all other applications consult your professional installer for proper attachment. Installation hardware not supplied by Norix.

### Warranty

1 year limited replacement warranty

### Maintenance

When cleaning stainless steel, Norix recommends the use of a cleaner made especially for stainless steel products.

## SPECIFICATIONS

**Model**

S565-528

**Weight**

0.8 lbs

**Dimensions**

Height 4"

Width 4"

Depth 2.7"

\*Intended for indoor use only

## DETAILS

**Color**

Brush satin finish

**Assembly**

Shipped assembled

**Fabrication & Material**

Formed and welded stainless steel wall mount clothes hook with ball-joint type collapsible hook.

Body: 14 gauge, type 304 stainless steelHooks: Machined type 304 stainless steel**Installation**

Bolt to wall. Wall mounting hardware not included. Tension not factory preset.

**Warranty**

1 year limited replacement warranty

**Maintenance**

When cleaning stainless steel, Norix recommends the use of a cleaner made especially for stainless steel products.

## SPECIFICATIONS

**Model**

S565-531

**Weight**

4 lbs

**Dimensions**

Height 6.5"

Width 18"

Depth 2.7"

\*Intended for indoor use only

## DETAILS

**Color**

Brush satin finish

**Assembly**

Shipped assembled

**Fabrication & Material**

Formed and welded stainless steel wall mount clothes hooks with ball-joint type collapsible hooks.

Body: 14 gauge, type 304 stainless steelHooks: Machined type 304 stainless steel**Installation**

Bolt to wall. Wall mounting hardware not included. Tension not factory preset.

**Warranty**

1 year limited replacement warranty

**Maintenance**

When cleaning stainless steel, Norix recommends the use of a cleaner made especially for stainless steel products.

## SPECIFICATIONS

**Model**

S565-545

**Weight**

10.5 lbs

**Dimensions**

Height 12"

Width 18"

Depth 9"

\*Intended for indoor use only

## DETAILS

**Color**

Brush satin finish

**Assembly**

Shipped assembled

**Fabrication & Material**

Formed and welded stainless steel wall mount clothes hooks with ball-joint type collapsible hooks.

Body: 14 gauge, type 304 stainless steelHooks: Machined type 304 stainless steel**Installation**

Bolt to wall. Wall mounting hardware not included. Tension not factory preset.

**Warranty**

1 year limited replacement warranty

**Maintenance**

When cleaning stainless steel, Norix recommends the use of a cleaner made especially for stainless steel products.